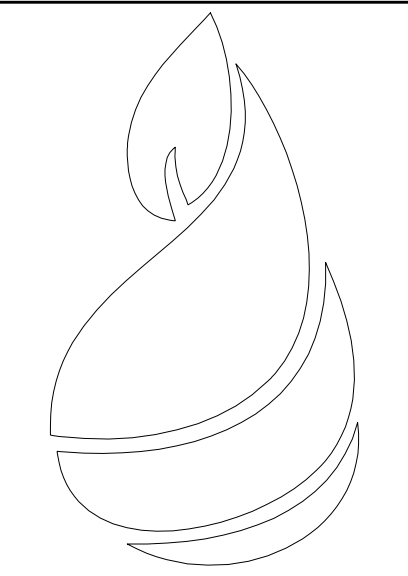


NOTES:
 - TRAYS TO BE OF 18GA 3042B STAINLESS STEEL
 - TOTAL LENGTH OF TRAYS IS 23.875"
 - FINISHED WIDTH IS 2.875"
 - STOCK SIZE IS 4.000"

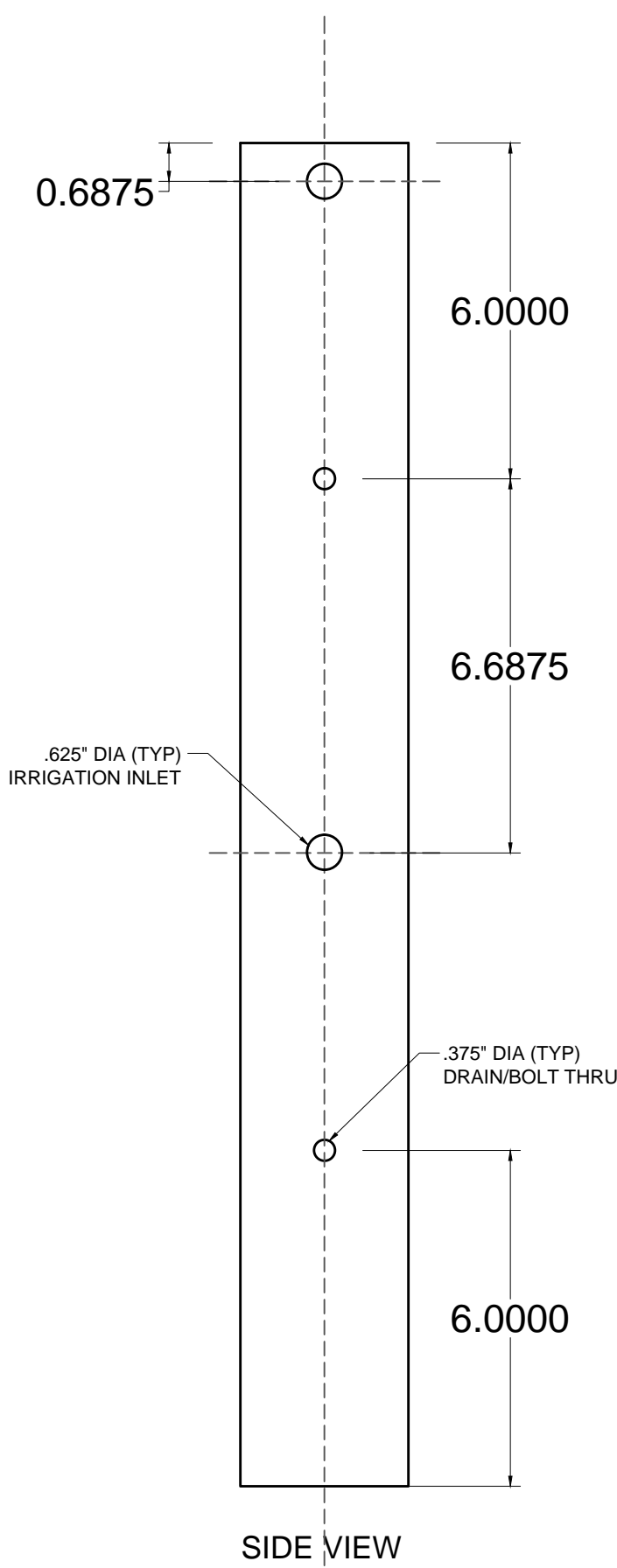
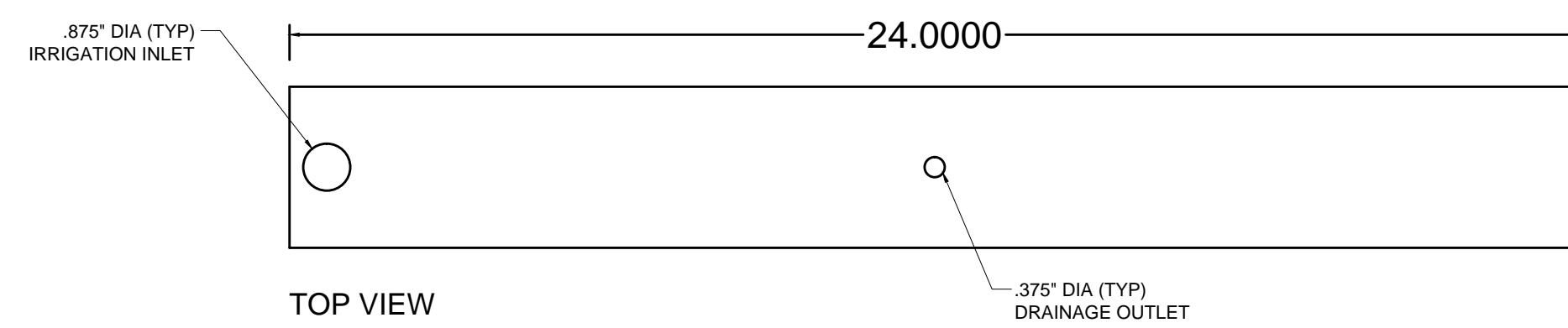
RETAINER TRAY DETAILS
 NTS

INSTALLATION
 NTS

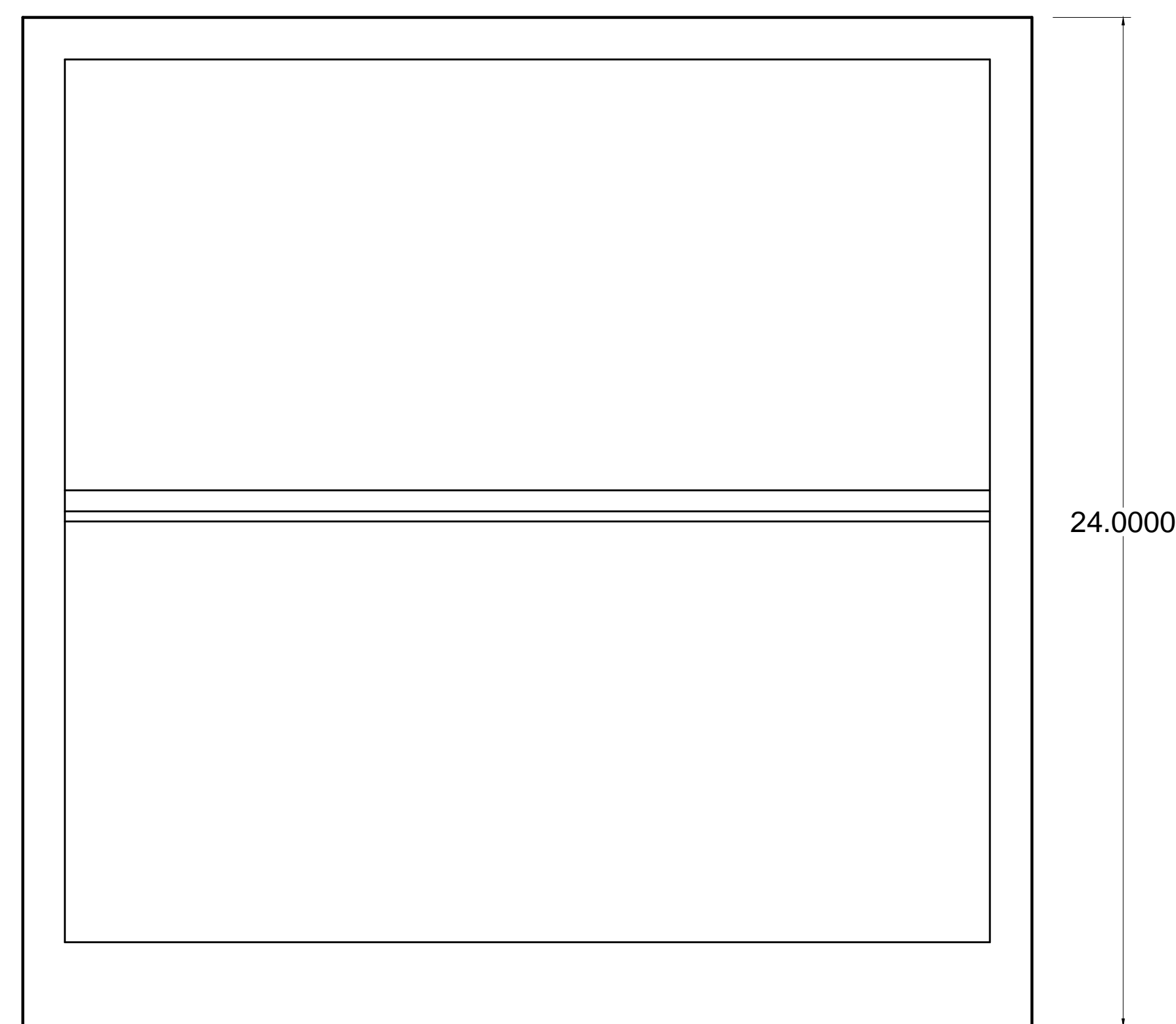


EZ CARE
 GROWING TECHNOLOGIES, LLC
 113 VINE STREET
 SAUGUS, MA 01906

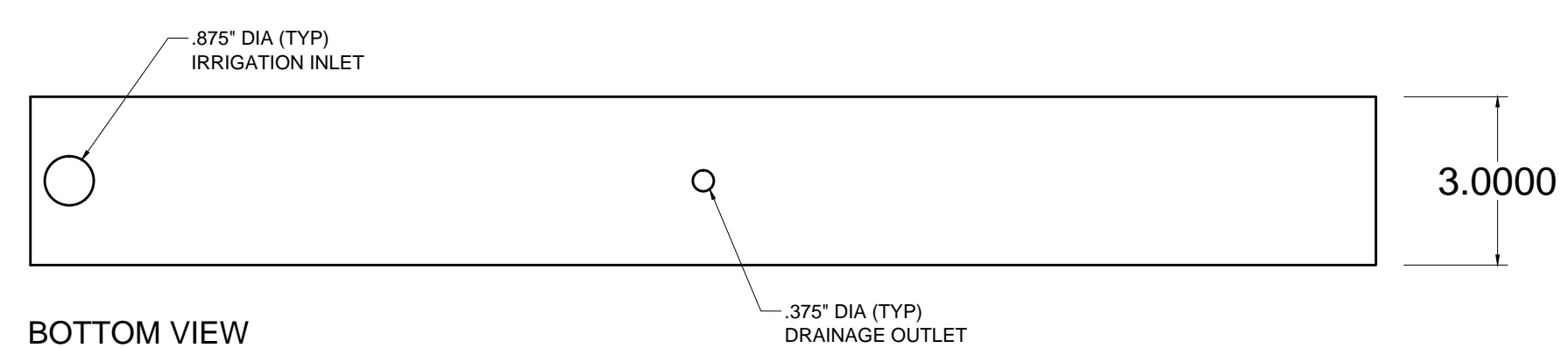
24" x 24" WALL UNIT
 SHOP DRAWING



SIDE VIEW



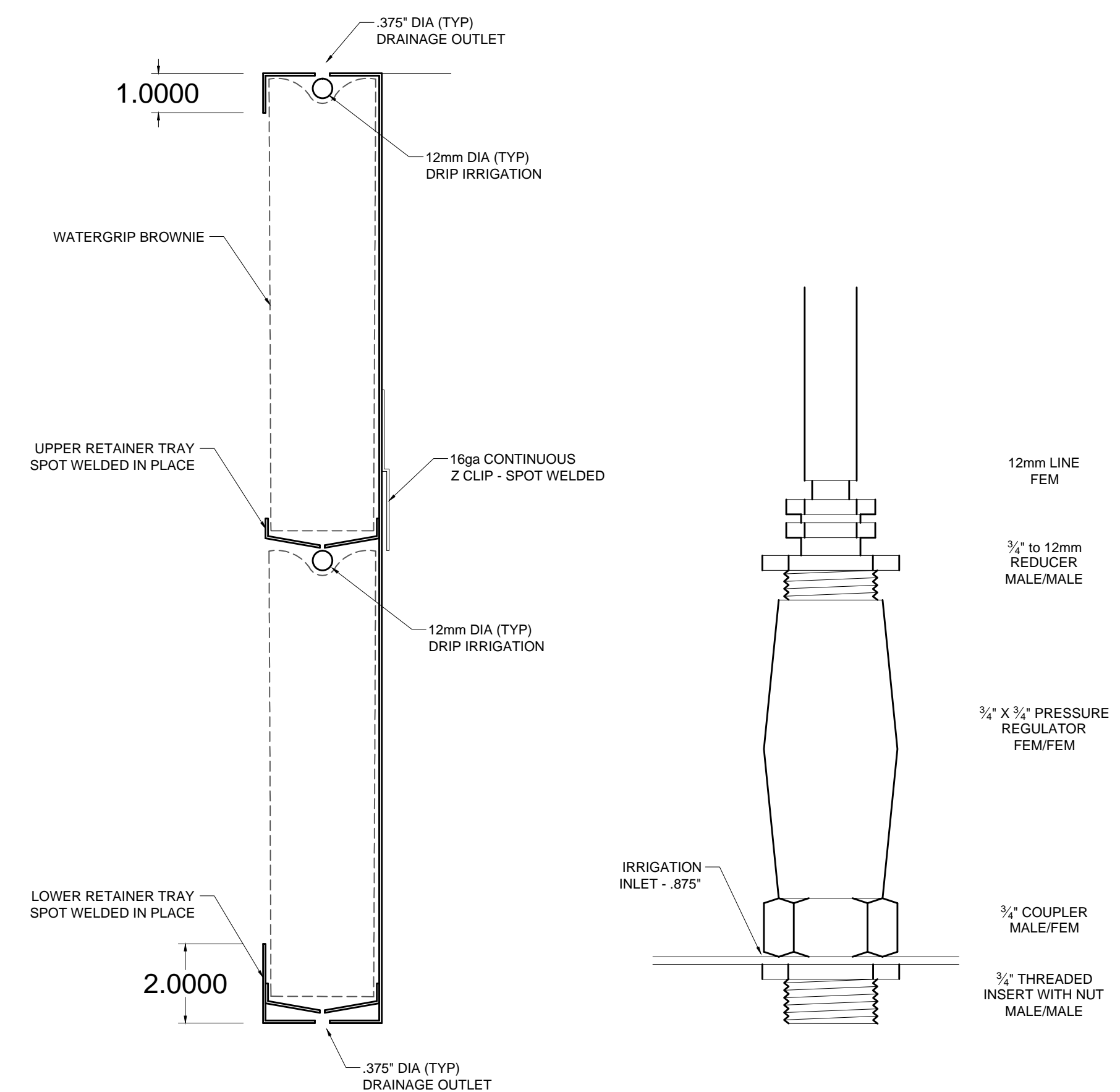
FRONT VIEW



BOTTOM VIEW

MODULE SECTION
 1" = 3"

IRRIGATION DETAIL
 NTS



GENERAL NOTES:
 -UNITS TO BE OF 18GA 3042B STAINLESS STEEL- ALL WELDS TO BE WATER TIGHT AND FINISHED
 -VERTICAL IRRIGATION LINE HAS 3/4" INLET, PRESSURE REGULATOR AND 3/4" TO 12mm REDUCER
 -THREADED OVERFLOW DRAINAGE BUNGS AND THROUGH BOLTS SHALL BE 1/4" OD
 -PLASTIC FITTINGS WILL ENSURE A WATERTIGHT SEAL BETWEEN MODULE AND IRRIGATION SYSTEM
 -THIS MODULE IS DESIGNED FOR UNIVERSAL FITMENT, ANY UNUSED HOLES WILL BE CAPPED WITH SILICONE SEALANT AND STAINLESS STEEL INSERTS

SECTION VIEWS

DRAWN BY: GEOFF ARTHUR
 DATE: 7-6-12
 SCALE: NTS

A122

ORTHO VIEWS
 1" = 3"